

DIRECTIONAL COUPLER

High Power

MODEL WA2200

1 – 11.0 GHz

600 WATTS

Features

- High Performance Design
- 600 W average/10 kW peak Power Handling
- Low Loss Air Dielectric
- Operation to +85°C without degradation

Specifications

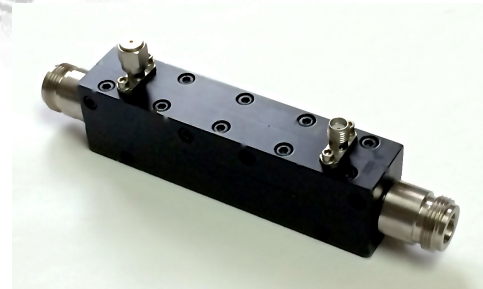
Nominal Impedance: 50 ohms

Frequency Range: 1 -11.0 GHz in bands

Power Rating: 600W CW/ 10 KW peak to +85°C ambient temperature, de-rated linearly to 60 watts at 125°C.

Temperature Range: -55°C to +125°C

Construction: Black aluminum alloy body with passivated stainless steel connectors. Gold plated beryllium copper contacts.



Connectors: Type N (thru) and SMA (coupled) stainless steel female connectors per MIL-STD-348A, interface dimensions mate nondestructively with MIL-PRF-39012.

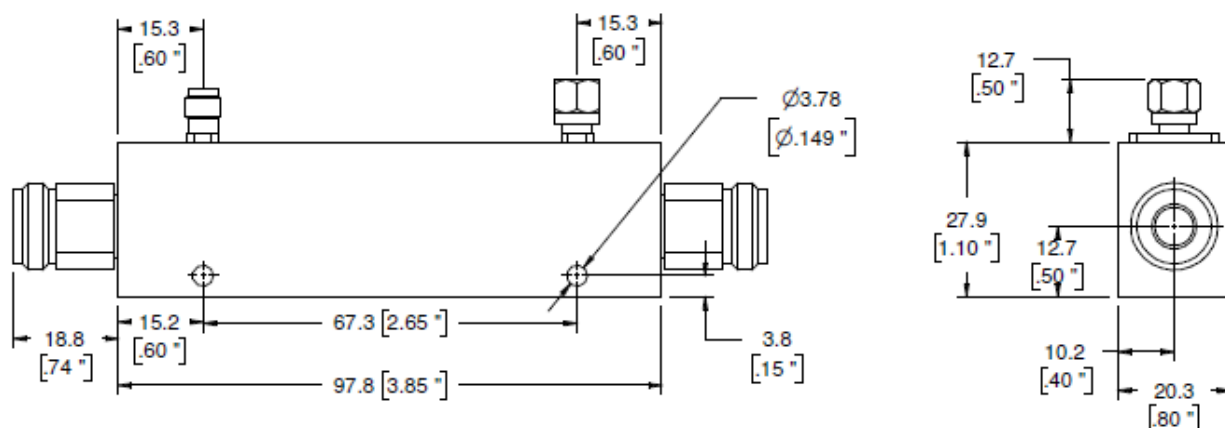
* Note: other connector configurations available upon request.

Weight: .19 kg/ 6.8 oz.

Physical Dimensions: as shown below

Note: Dimensions are given in mm (inches) and are maximum, unless otherwise specified.

Performance Specifications							
Model No.*	Freq Range (GHz)	Coupling Range (dB)	Coupling Accuracy (+ dB)	Freq Sensitivity (dB)	Insertion Loss, max (dB)	Directivity min (dB)	VSWR max
WA2201-x	0.75-1.5	30-50	1.0	0.7	.2	18	1.20
WA2202-x	1-4	30-50	1.0	0.7	.2	16	1.20
WA2203-x	2-8	30-50	1.0	0.7	.2	16	1.25
WA2204-35	1-11	35	1.5	1.5	.2	15	1.30



WEINSCHEL ASSOCIATES

TEL: 877.948.8342 / 301.963.4630 ♦ Fax: 301.963.8640

WEB: <http://www.WeinschelAssociates.com>

EMAIL: sales@WeinschelAssociates.com

235

Specification
Subject to change
without notice