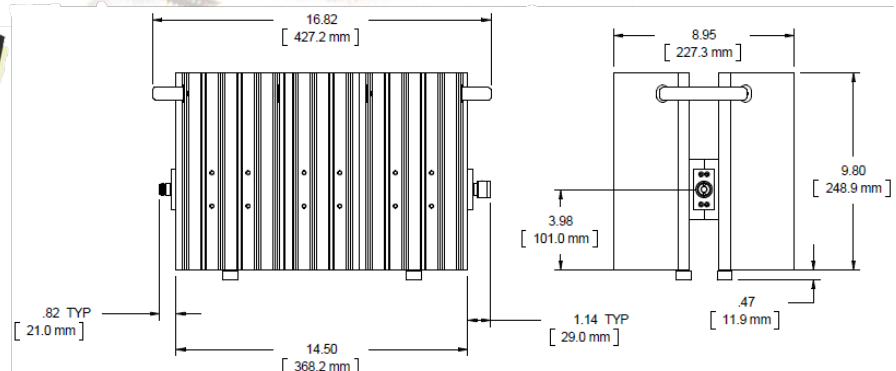
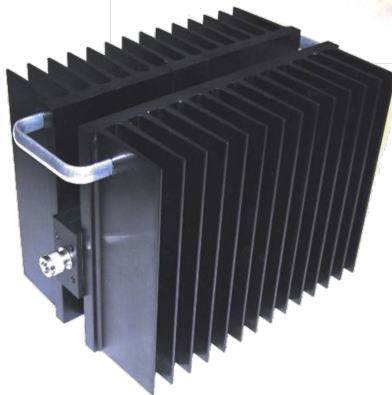


Fixed Coaxial Attenuator

WA70

DC – 3.0 GHz

1000 WATTS



Features

Type N, DIN 7/16 and 4.3-10 stainless steel Male/Female connectors per MIL-STD-348A. Type N connector interface dimensions mate nondestructively with MIL-PRF-39012. DIN 7/16 connector conforms to DIN 47223, IEC 169-4, VG 95250, CECC 22190. 4.3-10 connectors mate non-destructively with DIN EN 61169-54 and IEC 61169-54 interfaces. Designed to meet MIL-DTL-3933 environmental specification.

Specifications

Nominal Impedance: 50 ohms.

Frequency Range: DC to 3.0 GHz

Nominal dB Values: 20, 30, 40, 50dB

Power Coefficient: < 0.0001 dB/dB/W;
Unidirectional in power.

Power Rating: **1000 W** maximum average power to +25°C ambient temperature, de-rated linearly to 100 W at +125°C. **10 kW** peak (5 µsec pulse width; 5% duty cycle).

Temperature Range: -55°C to +125°C.

Temperature Coefficient: <0.0004 dB/dB/°C.

Construction: Black aluminum alloy body with passivated stainless steel connectors. Gold plated beryllium copper or stainless steel contacts. RoHS Compliant.

Standard Nominal Values and Deviations:

Attenuation Accuracy: +/- 1.5 dB

Maximum VSWR:

Frequency (GHz)	VSWR (MAX)
DC - 1.5	1.15
1.5 - 3.0	1.25

Dimensions: (see above)

Weight: 19.5 (687.84)

Height: 249 (9.8)

Width: 227 (9.0)

Calibration: Insertion Loss and VSWR performed across frequency range. Calibration test data available at additional cost.

Note: Dimensions are given in mm (in), or kg (oz). Weight figure is nominal, with our standard connector configuration. Additional connector options may be available.