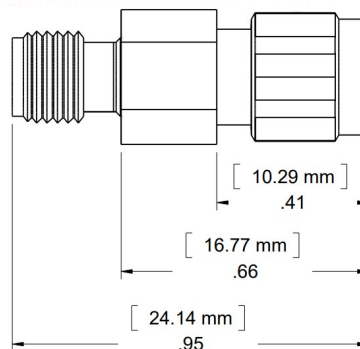
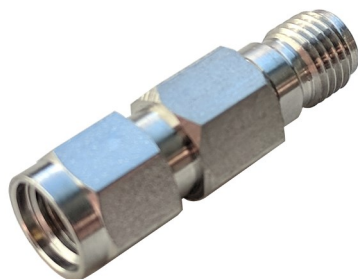


# DC Block

# WA6058H

9 kHz – 40.0 GHz

50 VOLTS



## Features

Precision 2.92 mm stainless steel M/F connectors per MIL-STD-348A, interface dimensions mate nondestructively with MIL-PRF-39012. Designed to meet MIL-DTL-3933 environmental specification.

5/16 hex provides secure torquing surface for mating in hard to get places.

Inner DC block combined with high frequency response.

## Specifications

**Nominal Impedance:** 50 ohms.

**Frequency Range:** 9 kHz - 40.0 GHz

**Voltage:** 50 volts

**Power Rating:** 20 W maximum average rated power to 25°C ambient temperature. 100 W peak power.

**Temperature Range:** -65°C to + 105°C

**Construction:** Passivated stainless steel body and connectors. Gold plated beryllium copper contacts. RoHS Compliant.

## Maximum VSWR:

Frequency	VSWR
	WA6058H
9 kHz - 10 kHz	1.45
10 kHz - 20 kHz	1.4
20 kHz - 18.0 GHz	1.4
18.0 GHz - 40.0 GHz	1.7

## Maximum Insertion Loss:

Frequency	Insertion Loss (dB)
	WA6058H
9 kHz - 40.0 GHz	1.0

## Dimensions:

Length: 24.2 (0.95)  
Weight: 0.004 (0.14)

*Note: Dimensions are given in mm (in), or g (oz). Weight figure is nominal, with our standard connector configuration. Additional connector options may be available.*