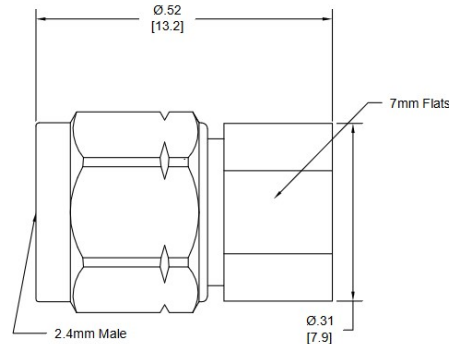


DC – 50 GHz

0.5 WATT



## Features

Precision 2.4 mm M stainless steel connector per MIL-STD-348A, interface dimensions mate non-destructively with MIL-PRF-39012. Designed to meet MIL-DTL-39030 environmental specification. High frequency design.

## Specifications

**Nominal Impedance:** 50 ohms.

**Frequency Range:** DC to 50 GHz

**Power Rating:** 0.5 W maximum average rated power to 25°C ambient temperature, de-rated linearly to 10% W at 125°C. 500 W peak power ( 5 µsec pulse width, 0.05% duty cycle.)

**Temperature Range:** -55°C to +125°C.

**Construction:** Passivated stainless steel body and connector. Gold plated beryllium copper contact. RoHS Compliant.

**Calibration:** VSWR performed across frequency range. Calibration test data available at additional cost.

**Options:** Chain  
Female 2.4 mm  
1 and 2 Watt Designs Available

## Maximum VSWR:

Frequency (GHz)	VSWR WA1405
DC - 50.0	1.45

## Dimensions:

**Length:** 13.2 (.52)  
**Weight:** 3.5 (.12)

*Note: Dimensions are given in mm (in), or g (oz). Weight figure is nominal, with our standard connector configuration. Additional connector options may be available.*