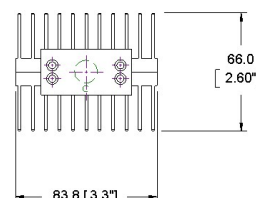
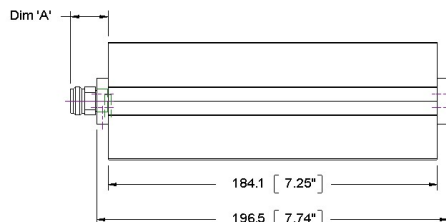
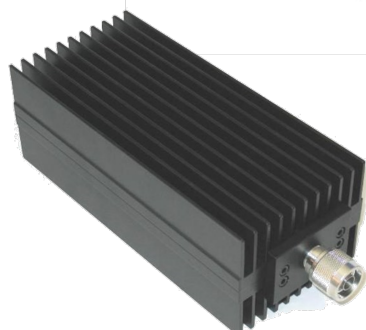


Termination

WA1458

DC - 6.0 GHz

250 WATTS



Features

Type N, DIN 7/16, or TNC stainless steel M/F connector per MIL-STD-348A, interface dimensions mate nondestructively with MIL-PRF-39012. Designed to meet MIL-DTL-3933 environmental specification. Unit may be mounted in any position.

Specifications

Nominal Impedance: 50 ohms.

Frequency Range: DC - 6.0 GHz.

Power Rating: 250 W maximum average rated power to 25°C ambient temperature, de-rated linearly to 25 W at 125°C. 10 kW peak power (5 µsec pulse width, 1.25% duty cycle).

Temperature Range: -55°C to +125°C.

Construction: Black aluminum alloy body with passivated stainless steel connector. Gold plated beryllium copper or stainless steel contact. RoHS Compliant.

Calibration: VSWR performed across frequency range. Calibration test data available at additional cost.

Low Intermodulation Option: Add -LIM after connector option to specify low intermodulation.

Maximum VSWR:

| Frequency (GHz) | VSWR |
|-----------------|--------|
| | WA1458 |
| DC - 2.0 | 1.1 |
| 2.0 - 6.0 | 1.15 |

Dimensions:

| Connector Type (- code) | Length |
|-------------------------|---------------|
| | Dimension 'A' |
| N-Type F -03 | 14.9 (.39) |
| N-Type M -04 | 22.7 (.89) |
| TNC F -05 | 14.4 (.57) |
| TNC M -06 | 17.7 (.70) |
| 7/16 DIN F -07 | 30.5 (1.2) |
| 7/16 DIN M -08 | 31.8 (1.25) |

Weight: 0.75 (26.5)
Height: 66 (2.6)
Width: 83.8 (3.3)

Note: Dimensions are given in mm (in), or kg (oz). Weight figure is nominal, with our standard connector configuration. Additional connector options may be available.