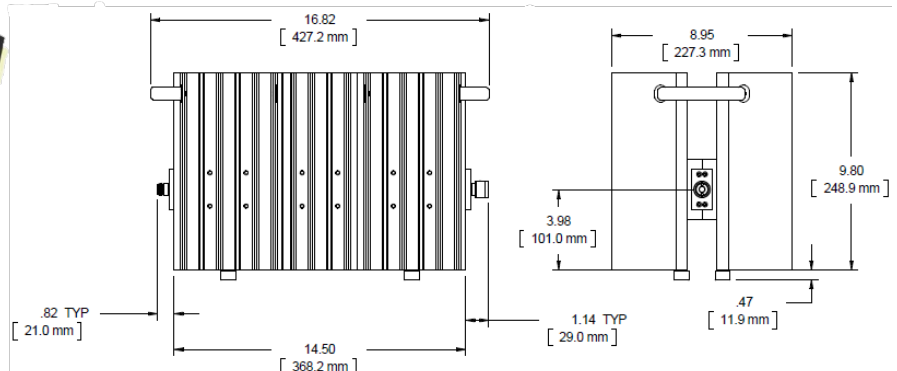
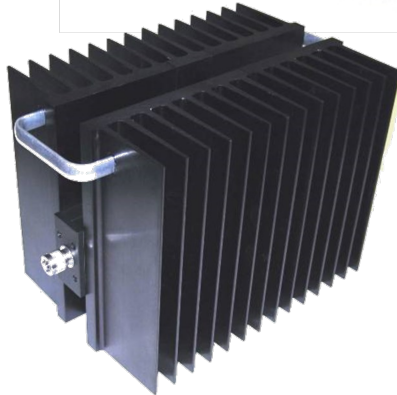


Termination

WA1470

DC - 3 GHz

1000 WATTS



Features

Type N, DIN 7/16 and 4.3-10 stainless steel Male/Female connectors per MIL-STD-348A. Type N connector interface dimensions mate nondestructively with MIL-PRF-39012. DIN 7/16 connector conforms to DIN 47223, IEC 169-4, VG 95250, CECC 22190. 4.3-10 connectors mate non-destructively with DIN EN 61169-54 and IEC 61169-54 interfaces. Designed to meet MIL-DTL-3933 environmental specification.

Maximum VSWR:

| Frequency (GHz) | VSWR (MAX) |
|-----------------|------------|
| DC - 1.5 | 1.15 |
| 1.5 - 3.0 | 1.25 |

Specifications

Nominal Impedance: 50 ohms.

Frequency Range: DC - 3.0 GHz.

Power Rating: **1000 W** maximum average rated power to 25°C ambient temperature, de-rated linearly to 100 W at 125°C. **10 kW** peak power (5 μ sec pulse width, 5% duty cycle).

Temperature Range: -55°C to +125°C.

Construction: Black aluminum alloy body with passivated stainless steel connectors. RoHS Compliant.

Calibration: VSWR performed across frequency range. Calibration test data available at additional cost.

Dimensions: (see above)

Weight: 19.5 (687.84)

Height: 261.6 (10.3)

Width: 227.3 (8.95)

Note: Dimensions are given in mm (in), or kg (oz). Weight figure is nominal, with our standard connector configuration. Additional connector options may be available.