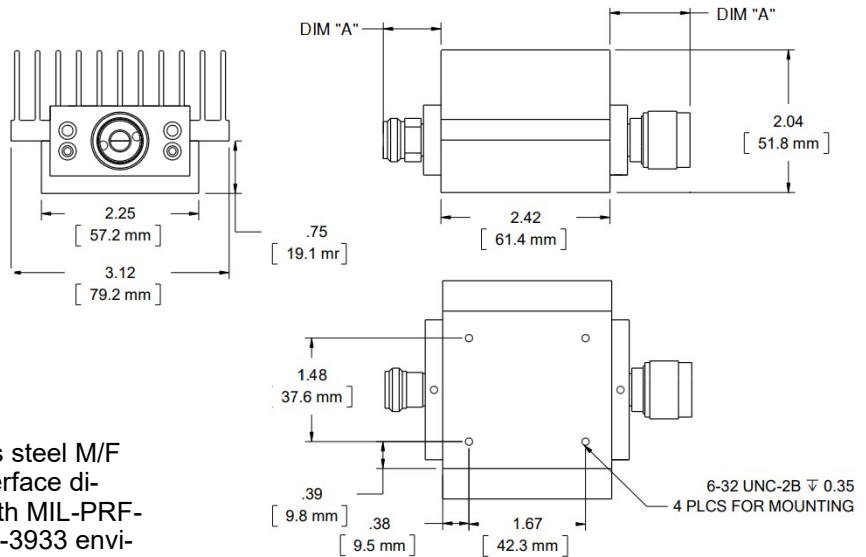
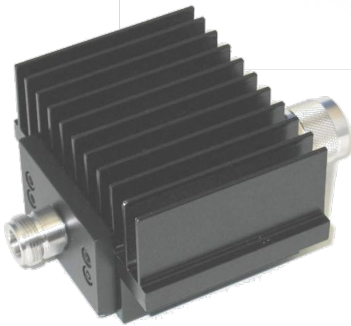


# Fixed Coaxial Attenuator

# WA68

**WA68: DC – 6.0 GHz**

**100 WATTS**



## Features

Type N, DIN 7/16, or SMA stainless steel M/F connectors per MIL-STD-348A, interface dimensions mate nondestructively with MIL-PRF-39012. Designed to meet MIL-DTL-3933 environmental specification. *Can be mounted in any position utilizing the 6-32 holes provided on the bottom of the unit.*

## Specifications

**Nominal Impedance:** 50 ohms.

**Frequency Range:** DC to 6.0 GHz

**Nominal dB Values:** 1 - 30 dB

**Power Coefficient:** < 0.0005 dB/dB/W;  
Bidirectional in power.

**Power Rating:** **100 W** maximum average power to +25°C ambient temperature, de-rated linearly to 10 W at +125°C. **5 kW** peak (5  $\mu$ sec pulse width; 1% duty cycle).

**Temperature Range:** -55°C to +125°C.

**Temperature Coefficient:** <0.0004 dB/dB/°C.

**Construction:** Black aluminum alloy body with passivated stainless steel connectors. Gold plated beryllium copper or stainless steel contacts. RoHS Compliant.

**Calibration:** Insertion Loss and VSWR performed across frequency range. Calibration test data available at additional cost.

### Standard Nominal Values and Deviations:

Attenuation (dB)	Accuracy $\pm$ dB
	WA68
1 - 2	1.2
3 - 30	1.25

**Maximum VSWR:** 1.3

### Dimensions:

Connector Type (- code)	Length
	Dimension 'A'
SMA F -01	9.8 (.39)
SMA M -02	10.9 (.43)
N-Type F -03	14.9 (.59)
N-Type M -04	22.7 (.89)
DIN 7/16 F -07	30.5 (1.2)
DIN 7/16 M -08	31.8 (1.25)

**Weight:** 0.55 (19.2)  
**Height:** 51.8 (2.04)  
**Width:** 79.2 (3.12)

*Note: Dimensions are given in mm (in), or kg (oz). Weight figure is nominal, with our standard connector configuration. Additional connector options may be available.*