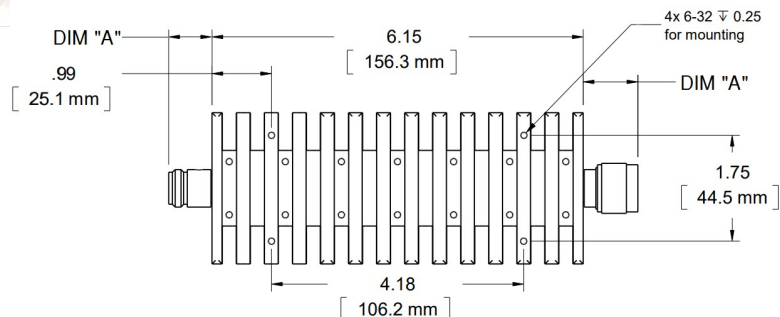
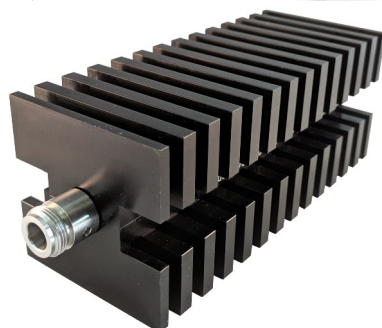


# Fixed Coaxial Attenuator

# WA93

DC – 18.0 GHz

100 WATTS



## Features

SMA, Type N, and TNC stainless steel M/F connectors per MIL-STD-348A, interface dimensions mate nondestructively with MIL-PRF-39012. Designed to meet MIL-DTL-3933 environmental specification.

## Specifications

**Nominal Impedance:** 50 ohms.

**Frequency Range:** DC - 18 GHz

**Nominal dB Values:** 10 - 30 dB

**Power Sensitivity:** < 0.005 dB/dB/W;  
Bidirectional in power.

**Power Rating:** 100 W maximum rated average power at 25°C, de-rated linearly to 10 W at 125°C. 1 kW peak power (5 µsec pulse width, 5% duty cycle).

**Temperature Range:** -55°C to +125°C.

**Temperature Coefficient:** <0.0004 dB/dB/°C.

**Construction:** Black finned aluminum alloy body with passivated stainless steel connectors and gold plated beryllium copper contact. RoHS Compliant.

**Calibration:** Insertion Loss and VSWR performed across frequency range. Calibration test data available at additional cost.

## Standard Nominal Values and Deviations:

Attenuation (dB)	Accuracy ± dB
	WA93
10	1.5
20 - 30	1.4

## Maximum VSWR:

Frequency (GHz)	VSWR
	WA93
DC - 8.0	1.25
8.0 - 12.4	1.3
12.4 - 18.0	1.4

## Dimensions:

Connector Type (- code)	Length
	Dimension 'A'
SMA F -01	9.8 (.39)
SMA M -02	10.9 (.43)
N-Type F -03	14.9 (.59)
N-Type M -04	22.7 (.89)
TNC F -05	14.4 (.57)
TNC M -06	17.7 (.70)

**Height:** 63.5 (2.5)  
**Width:** 63.5 (2.5)  
**Weight:** 1.5 (52.9)  
**Mounting:** 4x 6-32 thru

Note: Dimensions are given in mm (in), or kg (oz). Weight figure is nominal, with our standard connector configuration. Additional connector options may be available.