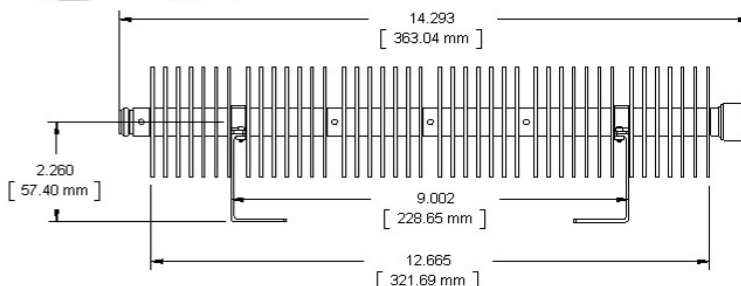


# Fixed Coaxial Attenuator

# WA95

**WA95/12: DC – 12.4 GHz**  
**WA95: DC – 18.0 GHz**

**200 WATTS**



## Features

Type N stainless steel M/F connectors per MIL-STD-348A, interface dimensions mate non-destructively with MIL-PRF-39012. Designed to meet MIL-DTL-3933 environmental specification.

## Specifications

**Nominal Impedance:** 50 ohms.

**Frequency Range:** WA95/12: DC - 12.4 GHz.  
 WA95: DC - 18.0 GHz.

**Nominal dB Values:** 10 - 40 dB

**Power Coefficient:** < 0.0001 dB/dB/W;  
 Unidirectional in power.

**Power Rating:** **200 W** maximum rated average power at 25°C, de-rated linearly to 20 W at 100°C. **1 kW** peak power (5 µsec pulse width, 10% duty cycle).

**Temperature Range:** -55°C to +100°C.

**Temperature Coefficient:** <0.0004 dB/dB/°C.

**Construction:** Black aluminum alloy body with passivated stainless steel connectors. Gold plated beryllium copper or stainless steel contacts. RoHS Compliant.

**Calibration:** Insertion Loss and VSWR performed across frequency range. Calibration test data available at additional cost.

## Standard Nominal Values and Deviations:

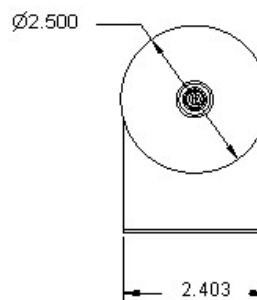
Attenuation (dB)	Accuracy (dB)	
	WA95/12	WA95
3	+1.0/-0.75	+1.75/-0.75
6	+2.0/-1.0	+3.5/-1.0
10 - 40	+2.0/-1.5	+3.0/-2.0

## Maximum VSWR:

Frequency (GHz)	VSWR	
	WA95/12	WA95
DC - 12.4	1.6	1.6
12.4 - 18.0	N/A	1.6

## Dimensions:

Diameter: 63.5 (2.5)



Length: 363.04 (14.29)  
 Weight: 1.01 (35.82)