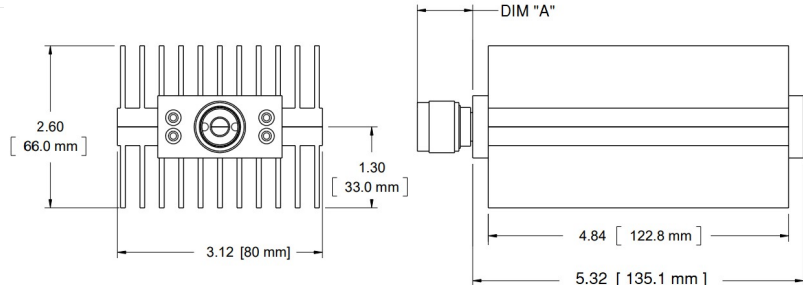
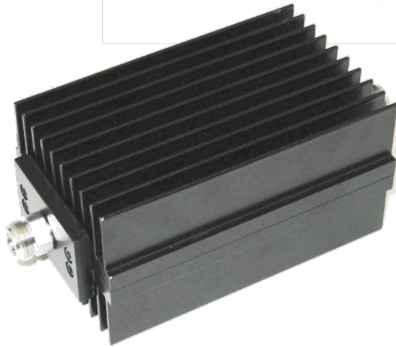


# Termination

# WA1428

## DC – 3.0 GHz

## 150 WATTS



### Features

Type N, TNC, SMA or DIN 7/16 stainless steel M/F connector per MIL-STD-348A, interface dimensions mate nondestructively with MIL-PRF-39012. Designed to meet MIL-DTL-3933 environmental specification. Unit may be mounted in any position.

### Specifications

**Nominal Impedance:** 50 ohms.

**Frequency Range:** DC - 3.0 GHz.

**Power Rating:** 150 W maximum average rated power to 25°C ambient temperature, de-rated linearly to 15 W at 125°C. 10 kW peak power (5 µsec pulse width, 0.75% duty cycle).

**Temperature Range:** -55°C to +125°C.

**Construction:** Black aluminum alloy body with passivated stainless steel connector. Gold plated beryllium copper or stainless steel contacts. RoHS Compliant.

**Calibration:** VSWR performed across frequency range. Calibration test data available at additional cost.

### Maximum VSWR:

Frequency (GHz)	VSWR WA1428
DC - 1.5	1.1
1.5 - 2.5	1.2

### Dimensions:

Connector Type (- code)	Length
	Dimension 'A'
SMA F -01	9.8 (.39)
SMA M -02	10.9 (.43)
N-Type F -03	14.9 (.59)
N-Type M -04	22.7 (.89)
TNC F -05	14.4 (.57)
TNC M -06	17.7 (.70)
7/16 DIN F -07	30.5 (1.2)
7/16 DIN M -08	31.8 (1.25)

**Weight:** 1.13 (39.9)  
**Height:** 66 (2.6)  
**Width:** 80 (3.12)

*Note: Dimensions are given in mm (in), or kg (oz). Weight figure is nominal, with our standard connector configuration. Additional connector options may be available.*

**Low Intermodulation Option:** Add -LIM after connector option to specify low intermodulation attribute.